

EMBASSY

LETTINGS & MANAGEMENT



19 Ainsdale, Cambridge, CB1 9JT

£2,600 Per month

Spacious 4 Bedroom House in CB1, close to Addenbrookes, ARM and the South Side of the City,

A spacious four bedroom house is available to rent in Cherry Hinton, Cambridge. Set in a quiet location, close to local amenities. Close to ARM and Addenbrookes, with excellent transport and bus links to the rest of Cambridge City.

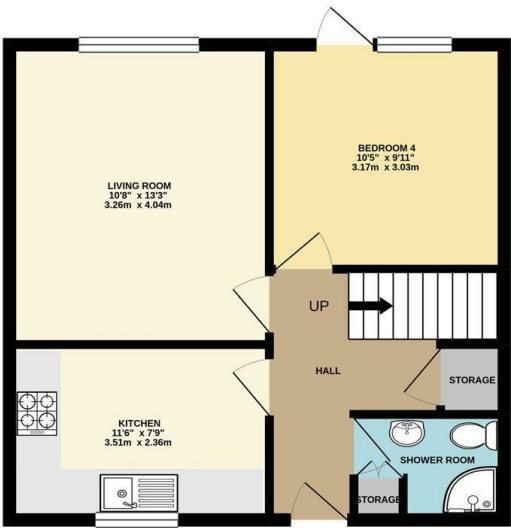
The property consists of four bedrooms (three bedrooms upstairs and one on the ground floor), a good size modern Kitchen with white goods. There is also a living room, two bathrooms; one shower room on the ground floor and a bathroom on the first floor and both of a very good standard.

Outside there is a large private garden.

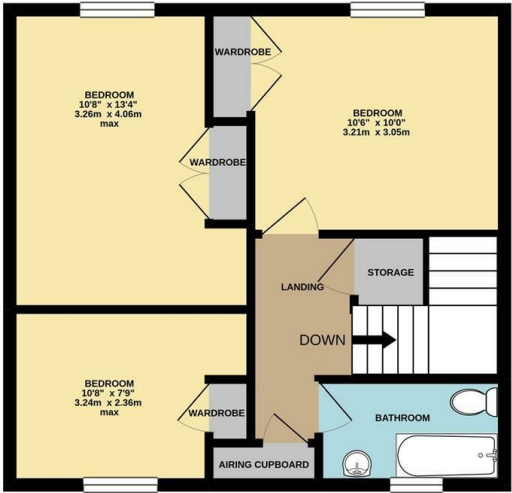


Floor Plan

GROUND FLOOR
474 sq.ft. (44.0 sq.m.) approx.



1ST FLOOR
464 sq.ft. (43.1 sq.m.) approx.

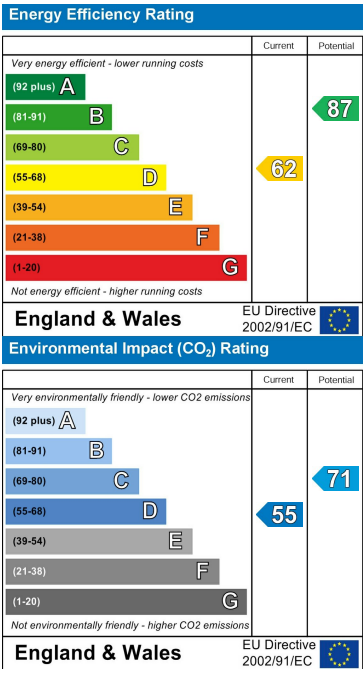


TOTAL FLOOR AREA : 938 sq.ft. (87.1 sq.m.) approx.
Whilst every attempt has been made to ensure the accuracy of the floorplan contained here, measurements of doors, windows, rooms and any other items are approximate and no responsibility is taken for any error, omission or mis-statement. This plan is for illustrative purposes only and should be used as such by any prospective purchaser. The services, systems and appliances shown have not been tested and no guarantee as to their operability or efficiency can be given.
Made with Metropix ©2021

Area Map



Energy Efficiency Graph



These particulars, whilst believed to be accurate are set out as a general outline only for guidance and do not constitute any part of an offer or contract. Intending purchasers should not rely on them as statements of representation of fact, but must satisfy themselves by inspection or otherwise as to their accuracy. No person in this firms employment has the authority to make or give any representation or warranty in respect of the property.